



Wanborough Parish Council

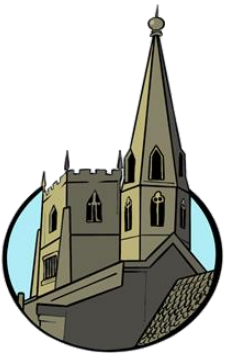
Welcome to the Annual Parish Assembly

Monday 18th May 2026 at 7.00pm

Agenda

- Welcome and Introductions – Chairman
- Chairman's Report
- Committee Reports
- Question & Answer

Chair's Report



- Challenges faced this year
 - i. Southern Connector Road still not open
 - ii. Ongoing Construction work for the New Eastern Villages
 - iii. Increased pressure on budgets
 - iv. Resetting the Allotments
- Our Clerking Team
 - Laura Evans – Parish Clerk
 - Anne Bradley – Assistant Clerk
 - Working hard to synchronise files etc
- Highlights during the year
 - i. New Cricket Nets
 - ii. Floodlights for the tennis courts
 - iii. Cleaning/clearing Beanlands Pond and discovering wildlife
 - iv. Ongoing litter picks
 - v. Building a strong alliance with our neighbouring Parish Councils

Hooper's Field Sports Facility Report



- Wanborough Tennis Club membership 170
- Wanborough Junior Football Club membership 220
- Wanborough Cricket Club membership 22+ Girls teams
- Wanborough Bowls Club membership 60
- Pétanque membership 25
- Park Yoga no membership required 50+
- School parking +++
- Parish council meetings /clubs +++
- First aid training
- Runners and walkers ++++



Open Morning Saturday 23 May 2026 10.00 to 12.30

All welcome.

Come along and meet some of the club's bats racquets balls boules etc provided.

Please wear suitable footwear for the courts and refreshments will be available.

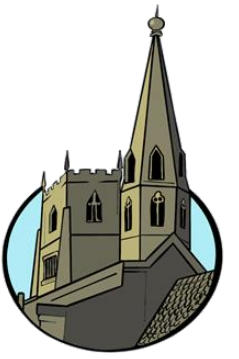
Opening event for cricket nets



Park Yoga free outdoor yoga sessions every Sunday from 9.30-10.30 throughout May to September.

Take your towel/matt and a bottle of water

Hooper's Field Expansion Project Report



Project Progress



- Cricket nets completed.
- LED temporary lights courts 3 and 4
- Permanent storage solution to be investigated
- Drainage and grass improvements to be investigated



Project Aims

- Improve sports facilities, health and wellbeing of our community
- Improve participation numbers encourage residents to be more active;
- Improve community facilities to increase letting income
- Improve financial performance, produce evidence to support funding applications
- Encourage walking and cycling connecting our active spaces



Staffing Committee Report



- Sally Thurston provided Clerk cover until September 2025
 - Highly experienced
 - Lives locally
 - Helped with assistant clerk recruitment (Anne Bradley)
 - Successfully guided through the Parish Councils
 - Internal audit
 - provided needed structure
 - Updated policies
- Laura Evans an experienced Clerk who lives locally joined the team in September 2025
- As a team – Anne and Laura have a good working relationship
- Staffing Committee
 - Meets Monthly
 - Checks Wellbeing of Clerks
 - Sets mutually agreed objectives
- Currently recruiting a Handyman to join the team
- 4 Councillor vacancies

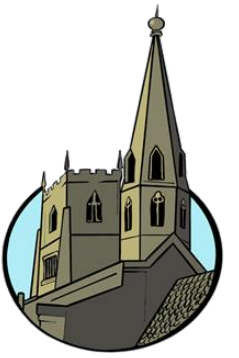
Footpaths and Village Maintenance



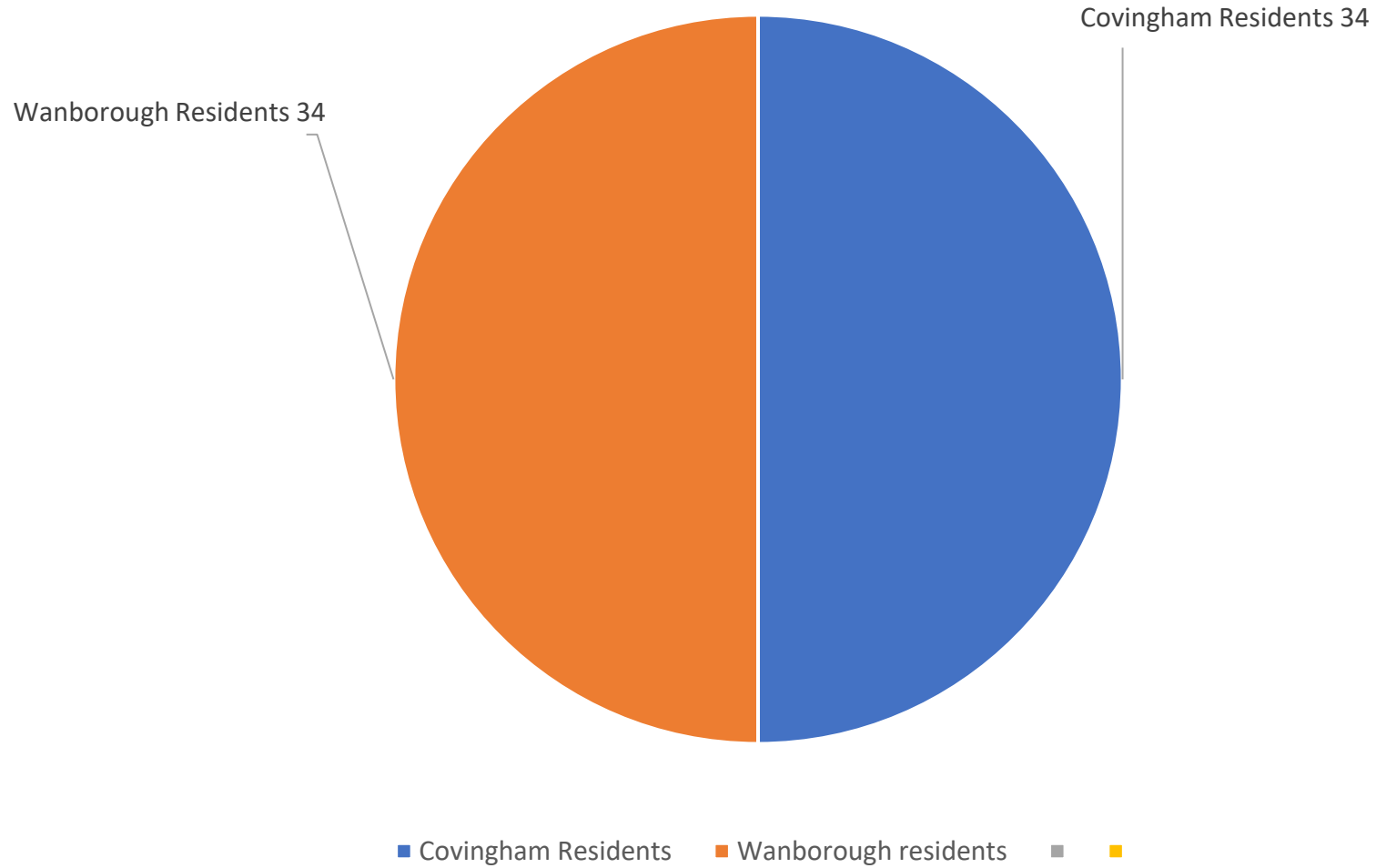
- Resource limited this year
- Allbuild have covered
- Maintained paths
- Cut Grass
- Fixed styles and bridges
- Fixed Wanborough Trail posts now budgeted for maintenance
- Looking for a new handyman
- Have mapped all footpaths ready for reporting program
- Removal or Rodway Sculpture
- Litter picking twice this year



Allotment Report



Allotment Plot Holders



Allotments Overview & Improvements



- Continued focus on improving the condition and usability of allotment sites
- The Assistant Clerk has worked proactively to bring the allotments back into good order
- Regular inspections are carried out to maintain standards and monitor plot usage

Support for Plot Holders

Two skips have been provided this year

- Supporting plot holders with the removal of old sheds, waste, and general clearance
- Helping improve overall site appearance and accessibility
- Buddy system for new plot holders

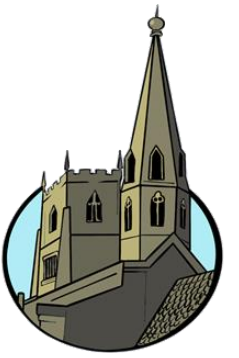
Future Plans & Projects

- Proposed installation V Mesh fencing, following requests from plot holders
- Development of a signed working partnership agreement with Covingham Parish Council - Aiming to strengthen collaboration and long-term management
- Ongoing commitment to improving facilities and supporting the allotment community



WANBOROUGH
Parish Council

Finance Report

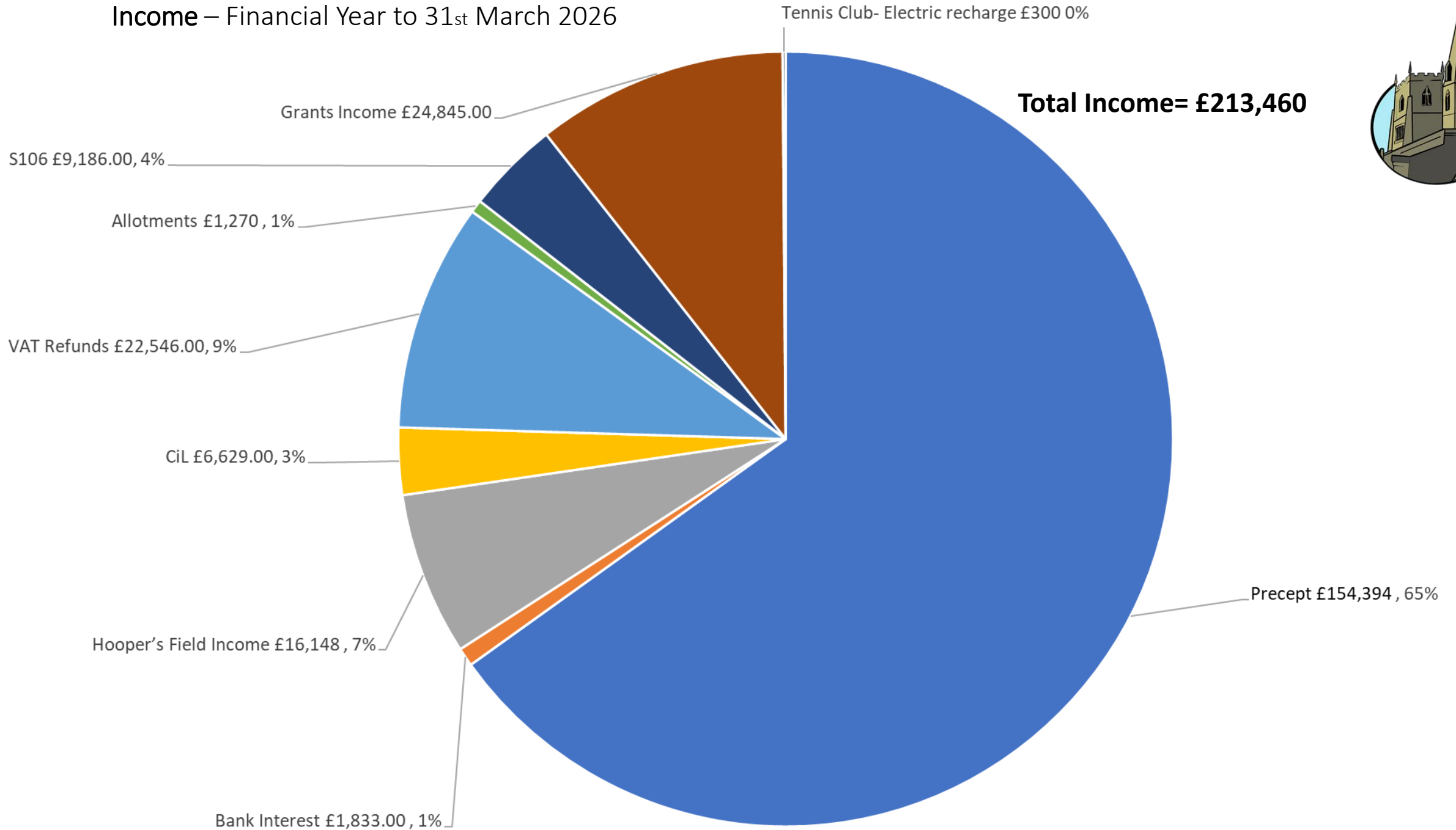


Budget for
2025/26 and
increase in Precept
for 2026/27

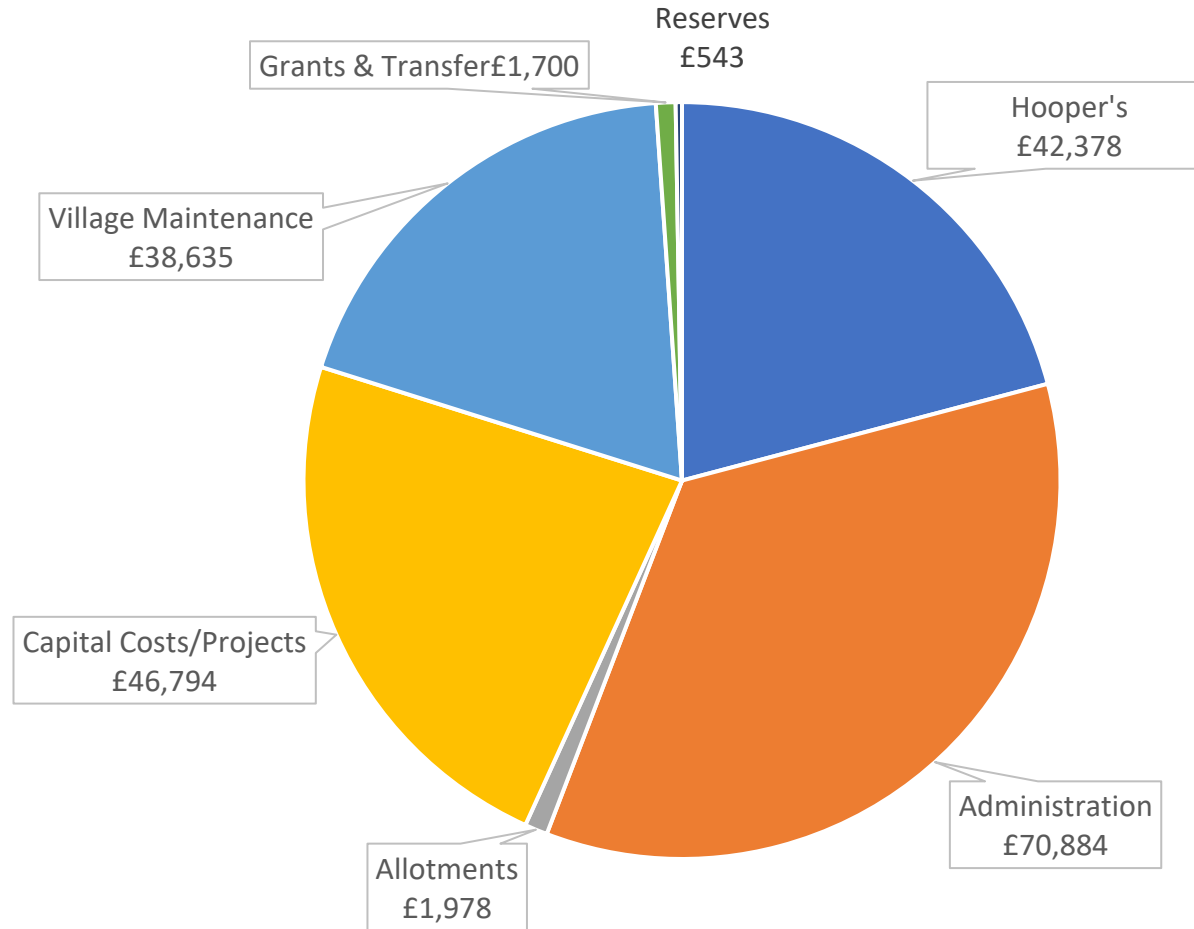
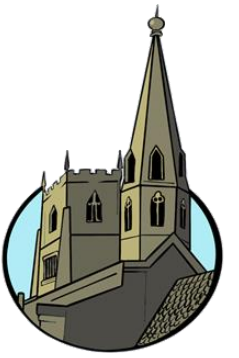
Income – Financial Year to 31st March 2026



Total Income= £213,460



Expenditure 2025-26



Capital Costs/Projects;
Crickets Nets= £41,111
New Boiler- £5,683

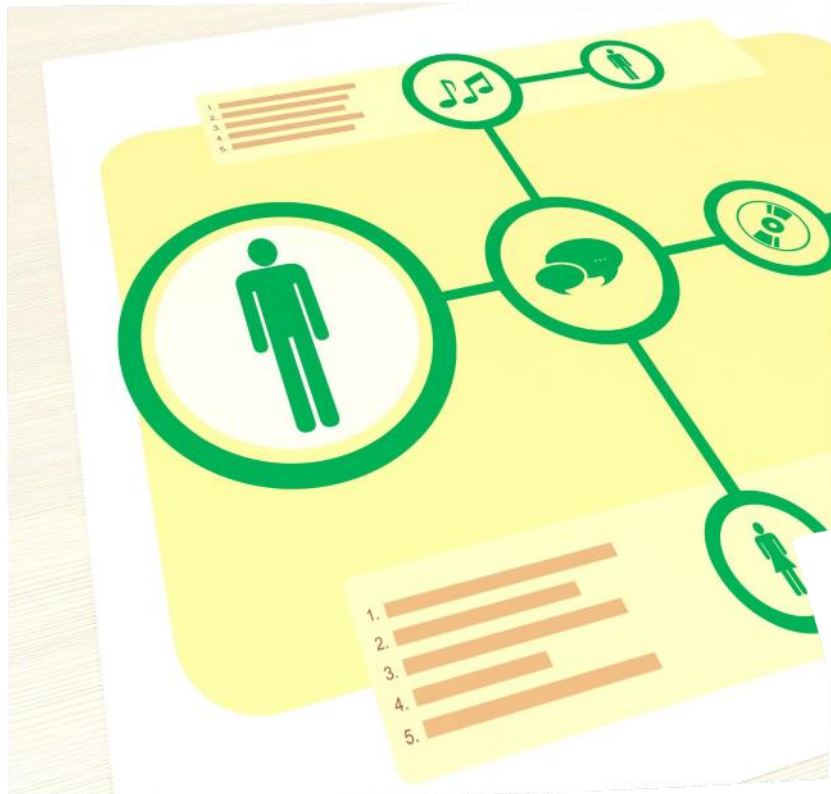
Total Expenditure = £202,912



2026–27 Budget and Precept Overview



Budget Summary and Precept Position for 2026- 2027



**7% modest increase
for 26/27 year**

Budget Allocation Overview

The 2026–27 budget totals approximately £171,407 covering staffing and operational support roles including a handyman. This includes future projects including the fencing of the allotments, Hooper’s storage improvements, and tree works, just to name a few! With some of the funding being drawn from Reserves.

Precept and Cost Transparency

The precept maintains service levels while allocating costs clearly across specific parish services for transparency.





WANBOROUGH
Parish Council



Questions & Answers